

INTERESTING OLD SETTLERS OF HAMILTON COUNTY

Hamilton County, Kansas

Written by Ruth Ausbun

Consultants: William Ellis Patton, Mrs. Sarah Edna Ritchie, and Mrs. Ben Cornell

Reference: Syracuse Journal

** Additional information added about certain people mentioned in this story*

MRS. ELIZABETH M. DURFEE*, who lived in Lake City, Barber County, Kansas, was one of the last survivors of that colony of forty members who came west from Syracuse, New York, in 1873, to start the city of Syracuse, Hamilton County, Kansas.

Mrs. Durfee was the only woman living in the colony, first named Hollidaysburg (*renamed Syracuse*). She was the daughter of Judge Henry N. Lester, founder of the *Syracuse Journal* in 1885, the oldest newspaper in the southwestern part of the state. Her uncle, Evelin P. Barber, was president of the colonizing group. (*See more details about Evelin P. Barber in the Hamilton County Story – Points of Interest in Syracuse.*)

Mrs. Durfee was a very young girl when she landed on the buffalo range and recalled the endless discussions that preceded the colonization in the fall of 1872. Her Uncle Evelin headed a committee to come to Kansas to select a location. Leaving Dodge City and going west, the group went on the Santa Fe work train that opened on Christmas day. They had been looking for a special place to live, and chose the area named Hollidaysburg.

Equipped with livestock, farming machinery, and household goods, the colonist traveled the long way through Kansas. Past Dodge, they rode a mixed train with passenger coaches and freight.

Several times the engineer had to stop the train for lines of buffalo to cross the track. Twice he slowed down accommodatingly for the men to shoot a few antelope, which the women cooked over the campfire at the end of the trip.

As a girl, Mrs. Elizabeth (*Lester*) Durfee followed her father in journalistic inclination. She was only fourteen when she became a western correspondent for several New York papers plus other newspapers in Denver, Pueblo, and Topeka. Today (*1936*), She still keeps her clipped articles in a scrapbook.

After Elizabeth married the ranch foreman, John Durfee, she learned a lot about the western range. John Durfee and the Hardesty brothers managed the Hardesty Ranch for eight years, the oldest in southwestern Kansas. They moved from Colorado in 1871 to the site of the famous fort and camping place called Fort Pleasant Encampment, which is near the state line.

Mrs. Durfee saw the old west go and saw the new towns come to Hamilton County, where she had lived most of her life. There, her children were born. Their pictures are among the souvenirs found in the cornerstone of the Grand Opera Hotel in Syracuse. The hotel built in 1886 is still standing. She saw the last buffalo herd pass through Syracuse en route to the river in 1879.

The uncle of Mrs. Durfee, Mr. E. P. Barber, colony president, (*mentioned earlier*) built the first house of any importance in Syracuse. It is still standing in a grove of cottonwoods, which Mr. Durfee and the Santa Fe Forestry Men helped Mr. Barber plant in 1873.

Although only a private house, it was to be used as a fort if necessary. They built rooms upstairs with small windows, which helped the settlers fire their weapons at the Indians. Yet, according to Mrs. Durfee, although many Indians came, they were always friendly and called her uncle the "White Chief." Socially the early days were those of horseback riding and old-fashioned dances.

By the late eighties, however, society became formal. Syracuse was full of easterners. Girls from boarding schools, who had learned to ride from a teacher, wore long-skirted riding habits. They came in to form exclusive clubs. No longer did the cowboys fiddle for the dances. Orchestras were hired from neighboring towns to play for the parties attended by the sophisticated young ladies and their eastern escorts-professional men, bank clerks, and the like.

JOHN J. DONOHUE* filed on a piece of land in Hamilton County just east of Syracuse. He came here before the Santa Fe railroad was built, arriving on the first government freight train pulled by oxen and mule teams. He shipped the first piece of freight, a wagon that needed repair, from Syracuse by railroad. Mr. Donohue was a buffalo hunter at first. Later he became a government scout, carrying messages to Fort Hays and Fort Lyons, traveling horseback at night, and using the North Star for directions. For seven years, he slept out of doors on the western prairies without even a tent. After Mr. Donohue passed away, his wife, Mrs. Electa Donohue, contributed vast sums of money to the building of "The Donohue Memorial Hospital" at Syracuse.

CHARLES W. NOELL* born 25 Oct 1866, was the son of Julius Hatcher Noell and Martha Casey. He married Laura M. Kimball, daughter of John and Sarah Kimball, in 1901. One son and seven daughters were born into this marriage. They came to the Syracuse area in about 1906. Having taught schools in Syracuse for several years, Charles Noell was elected County Superintendent. About 1936, he held the office of the Register of Deeds. (*Which he held for several years.*)

W. F. (WILLIAM FREDERICK) REED* of Pomeroy, Ohio, came to Syracuse in 1886. He founded the First Bank of Syracuse and was instrumental in establishing the Valley State Bank. He was also involved in the county's early political activities, following the county seat wars, and was the first elected county treasurer in Syracuse. He served

Syracuse as Mayor for several years and as Chairman of the Republican Control Committee.

JAMES B. HAMMOND* lived in Syracuse and was a schoolteacher there, even before the town built the school in 1887. He held positions such as the president of the Old Settlers Association and the Democratic County Chairman. He sold insurance and once held a political appointment given to him by Governor Hodges of Kansas.

WILLIAM ELLIS PATTON, born in 1870, was the son of John Patton and Sarah Emma Lomas. He came here from Iowa in 1887 at the age of eighteen years. He lived in this vicinity for the rest of his life. For the first twenty-five years, he lived on a ranch and was a bachelor for twelve of those years. Then he married Louise Ruggles (1879-1978), daughter of Frederick W. Ruggles and Mary Rebecca McPherson, and two of his children were born there on the ranch. He also ran a 2000-acre ranch near Johnson for fifteen years. There was only a schoolhouse, one store, one hotel, and one dwelling at that time. That was all there was at Johnson for many years. In 1912, he moved to Syracuse. Kendall was the county seat at this time, and he was here during all of the county seat fights and can tell many interesting incidents that happened. After moving to Syracuse, Mr. Patton served the town for 25 years. Here his remaining children were born. He served in various offices such as the following; one term as county assessor, four terms as register of deeds, and thirteen years in an associated business called "Walter & Patton." He also served on the school board for two years. During this time, he built two homes. Since then, he has been in the insurance business for fifteen years. Where the trees now stand north of the courthouse, there was once a dump yard. Mr. Patton had trees planted there many years ago. For the last year, the WPA workers have made this into a park. He also planted trees (with his own hands) near the hospital, jail, and several other streets. *(See William Ellis Patton, Project Consultant – Hamilton County, for more details)*

MR. AND MRS. BEN CORNELL, who were considered "old-timers" here, can tell many experiences of pioneer life. They came here in 1907 and "proved up" a claim. They had to ride across the sandhills with a team and wagon, as there were no automobiles at that time. There were no roads of any sort, only a cow path to follow. There were many herds of Texas cattle and many horses. They would breakthrough into their lots and drink up all of the water. Cowboys would stop at the farms and eat lunch. Many of the settlers had to haul water for miles before getting a well dug on their place. As they would drive across the sandhills, they would take lunch and newspapers to pass away the time. It would take all day to go to town this way, and sometimes it took longer if they lived very far away. Several of the older settlers have seen many bad electrical storms in this southwest. Many of them can tell about seeing cattle fall over in the lots that had been struck by lightning. Mr. and Mrs. Cornell now (1936) live in Syracuse. *(See Mrs. Ben Cornell, Project Consultant –Hamilton County, for more details)*

MR. WILLIAM C. DAUGHERTY* of Lacrosse, Kansas, arrived in Syracuse on 22 Oct 1906. After purchasing the local Drug Store stock, on 23 Oct 1906, he opened his

drug store for business, located in what was known as the N. J. Sawyer building next to the First National Bank. On 3 Feb 1907, the Santa Fe Station, the Harvey House, and several other buildings burned, including his drug store. He was able to save some of the store merchandise, and the business resumed in the building north of Scrantons Lumber Yard, occupied by George Blanchet. On 15 Feb 1907, Mr. Daugherty purchased the stock of drugs belonging to McKeever Schroll and was able to open his store in the new building. In 1908, Mr. Daugherty bought the lot where the present store stands today and began the erection of a new drug store building. In April 1909, he moved into the new home of his store. In 1930, Mr. Daugherty erected another drug store. A great deal of his first business trade was from southwestern Kansas and southeast Colorado. It was common to see among the customers, people from Baca County, Colorado, plus Morton, Stanton, Grant, Stevens, plus Kearny, Greely, and Wichita counties. Now, most of the trade comes from our home (*Hamilton*) county. The store has always kept a well-assorted stock of drugs, sundaes, books, etc., and in fact, almost anything usually found in a first-class drug store. Mr. Daugherty is still (*in 1936*) a resident of Syracuse and continues to run his drug store.

EASTON COLE BRAY* was born in Caldwell County, Missouri, and came to Hamilton County in 1903. He has lived here in this county since coming to Kansas. He served three consecutive terms as County Clerk. Aside from that, Mr. Bray has engaged extensively in the estate and loan business. He had faith in the future of Western Kansas.

Additional Information
ELIZABETH M. (LESTER) DURFEE



ELIZABETH AND JOHN DURFEE

ELIZABETH MATILDA (LESTER) DURFEE, daughter of Judge Henry N. Lester (1838-1913) and Frances Austin (1839-1886), was born on 10 Sep 1860 in Cayuga County, New York. In about 1876, Elizabeth married **EPHERHAM DAVIS** (born abt 1857) and they had a son, **MURRAY AUSTIN DAVIS** (1877-1954). (*Epherham and Elizabeth may have divorced or he may have died after their son was born. Records are not clear on this.*)

Elizabeth then married **JOHN SILAS DURFEE**, son of John Durfee (1818-1850) and Sarah Ann Wilcox (1826-1892), on 26 Jan 1881 in Colorado. He was born on 13 Feb 1850 in Council Bluffs, Pottawattamie County, Iowa. John and Elizabeth lived on the banks of the Arkansas River in Syracuse, Kansas. In about 1897, they sold their home to the Andrew Kehl family and moved to the Medicine Lodge, Barber County, Kansas area. (*Barber County, Kansas is located in the South-Central part of Kansas.*) Elizabeth died in 1938, and John died on 17 Dec 1941. Their burial was at the Lake City Cemetery in Lake City, Barber County, Kansas.



LAKE CITY CEMETERY,
Lake City, Barber County, Kansas

The children born in their marriage were:

GERTRUDE AGNES DURFEE was born on 14 Dec 1881 in Syracuse, Kansas. On 20 Dec 1904, she married Frank Samuel Cooke, son of William Harry Cooke and Lillian Hartman, in Lake City, Barber County, Kansas. Frank was born on 15 Nov 1880 in Jackson County, Missouri. Seven children were born in their marriage: Lillian Inez (Cooke) Lake (1906-1992), Guy Samuel Cooke (1908-1974), Alice B. (Cooke) Vanderplas (1910-2005), Harry Frederick Cooke (1915-1934), Keith L. Cooke (1917-1984), Philip Randolph Cooke (1919-2002), and Rex Leon Cooke (1921-2006). Frank Samuel Cooke passed away on 5 Jun 1947, and in 1950, Gertrude married Eugene L. Overton. Mr. Overton was born on 11 Aug 1880 in Syracuse, Kansas. He was first married to

Clara Ann Paisley. Clara died in 1944. Eugene Overton passed away on 6 May 1955, and his burial was at the Syracuse Cemetery in Syracuse, Kansas. Gertrude died on 8 Mar 1981 in Lake City, Barber County, Kansas. Interment was at the Lake City Cemetery next to her first husband, Frank Cooke.

HENRY BENJAMIN DURFEE was born on 15 Oct 1883. About 1910, he married Iva Allspaugh, daughter of Salas Allspaugh and Latisha Schoonover. Iva was born on 16 Feb 1893 in Shawnee, Pottawatomie County, Oklahoma. In 1920, Henry and Iva made their home in Corona, Lincoln County, New Mexico, and by 1930, they had moved to the Delta County, Colorado area. In 1953, they were living in Chico, Butte County, California. Iva died there on 10 Sep 1954. Henry passed away on 12 Jun 1959 while visiting Colorado. Henry and Iva had the following children; John Sillas Durfee, Donald H. Durfee, Vaughn M. Durfee, Joseph Floyd Durfee, Iva Retta (Durfee) Patton, Lela Retha (Durfee) Wilcox, Reba Cosmo (Durfee) Long, Joseph Floyd Durfee, and Crystal June (Durfee) Rivers Pereira.

FREDERICK "FRED" JOHN DURFEE was born on 26 Mar 1888 in Syracuse, Kansas. He married Annie Martha Berry on 26 Aug 1916 in Carrizozo, Lincoln County, Arizona. Annie was born on 9 Jul 1895 in Springerville, Apache County, Arizona. Fred died on 13 Feb 1966 in Hotchkiss, Delta County, Colorado and Annie died there on 12 Jul 1984. Burial for both was at the Riverside Cemetery in Hotchkiss, Colorado. Their children were; Velma Sue (Durfee) Cooper, Mildred Mae (Durfee) Miller, Ina Lee (Durfee) Owens, Anna Freda (Durfee) Zanni, Guy Raymond Durfee, Robert Edward Durfee, Alice (Durfee) Kurpis, Frederick John Durfee, Jr., Ione (Durfee) Jenkins, and John Charles Durfee.

SARAH EDNA DURFEE, born 19 Dec 1889 in Syracuse, Hamilton County, Kansas. **See Project Consultant – Hamilton County, Mrs. Sarah Edna (Durfee) Ritchie.*

MILDRED CAROLINE DURFEE was born on 4 Nov 1897 in Lake City, Barber County, Kansas. On 20 Aug 1919, she married Orville W. Marquand in Medicine Lodge, Barber County, Kansas. Orville was born on 8 Aug 1889. Mildred passed away on 23 Jan 1975 in Marshall, Saline County, Missouri, and Orville died on 27 Sep 1976. Burial was at the Highland Cemetery in Medicine Lodge, Kansas. Four sons and two daughters were born in their marriage: William Orville Marquand, Brice Marquand, Dean Marquand, Dale Marquand, Barbara (Marquand) Jordan, and Audra Mildred (Marquand) Molinskey.

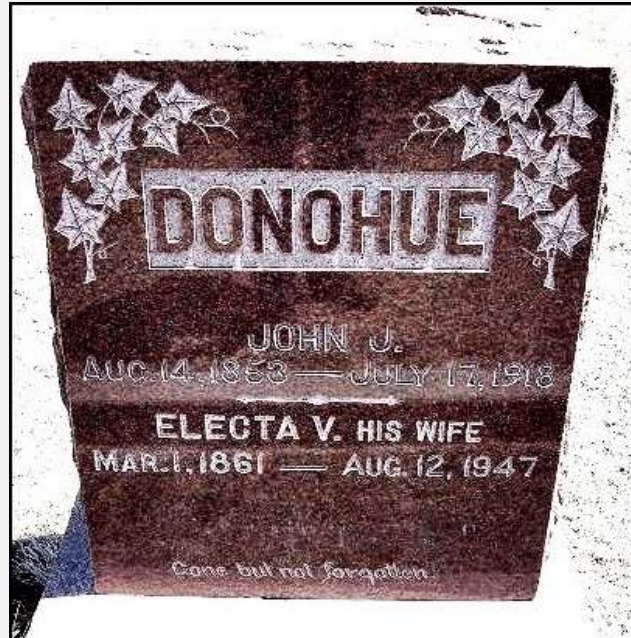
Additional Information

JOHN J. DONOHUE

JOHN J. DONOHUE was born on 14 Aug 1853 in New York City and died in Kansas City, Missouri on 17 Jul 1918. (*Death certificate gives July 16th.*) He married **ELECTA V.** (*Maiden name not found.*) They spent their married life in Coolidge, Hamilton County, Kansas where John was a farmer, working the land on their farm. Electa was born on 1 Mar 1861. After John died in

1918, she lived in the Kansas City, Wyandotte County, Kansas area for a number of years. There she owned her home at 3211 Strong Avenue. The house was large enough for her to rent out rooms to lodgers.

On 15 Oct 1941, a car hit Electa and both of her legs were badly hurt. She was unable to walk well from then on. She returned to Hamilton County, living in Sublette. In March of 1944, she entered the Syracuse, Kansas hospital and stayed there until her passing on 12 Aug 1947. Burial for both was at the Coolidge Cemetery in Coolidge, Hamilton County, Kansas.



COOLIDGE CEMETERY
Coolidge, Hamilton County, Kansas
Photograph provided by Leon Barton

NEWSPAPER OBITUARIES

JOHN J. DONOHUE

John J. Donohue's friend, Harry S. Crittenden, wrote this touching obituary about him.

The Syracuse (Kansas) Journal - Friday, 26 Jul 1918

JOHN J. DONOHUE

I, Harry S. Crittenden, have enjoyed the acquaintance and friendship of John J. Donohue for the greater part of our lives, about forty-two years. During the 22 years of that time being associated together in the building and operating the Frontier Canal and in the ranching business during the past twenty-five to thirty years, we have been more or less associated with running our

stock together on the range. John's strong character and personality created a lasting impression on me as a boy. As time passed and we became more closely associated in business and social matters, that impression grew into a warm admiration and love for the many generous and kind things it always seemed to be his pleasure in doing among his neighbors and friends. Always a lover of truth and square dealing, one only had to make a false statement to be questionable for all time with him. Being always a lover of his country and patriotic in the extreme, I have heard him say many times that a person who did not love the stars and stripes should not be allowed to remain here.

We remember when he bought the raw land that he later improved. There were fine alfalfa fields and a beautiful home with a profusion of flowers and shrubbery. Being intensely fond of flowers, he and his good wife had a great deal of enjoyment in caring for the many flowers grown in their yard. His home life was ideal, and it always seemed a great pleasure to both Mr. and Mrs. Donohue to entertain their friends at their home until they sold their interests here and moved to Argentine, Kansas, about fifteen months ago. Since then, he had not been in very good health, and I found from my visits with him in Argentine that he was not satisfied with the new element where he was placed but rather longed for the companionship of his old friends and neighbors. Having spent about fifty years of his life in Western Kansas and Eastern Colorado, and the first few years as a buffalo hunter and then later as stockman and farmer, he could not become reconciled to another place than that in which he had spent nearly all of his life. Indeed the reward for him was that those who knew him longest loved him best. Many feel the loss of his untimely death, both business and socially. In all business matters, we remember him as always contending for what is right and in the Masonic Lodge room ever considerate of a brother's welfare. Truly, his brethren mourn.

Born in New York City on 14 Aug 1853, John J. Donohue went to Rockford, Illinois when he was two years of age, and a few years later (*when he was about fourteen or fifteen years old*), he went as an orphan to Ft. Leavenworth and went with a Government train to Ft. Hays. During the next few years, he was in Government service and hunted buffalo on the prairies of Western Kansas. He was located at old Ft. Aubry in this county. Soon after that, the fort became a Government post. He was a member of the Coolidge Lodge 316, A. F. A. M., the Coolidge Lodge 145, O. E. S., the Syracuse Chapter 88, R. A. M., the Dodge City Commentary 50, the Wichita Consistory 2, and the Saline Shrine.

John Donohue died at the Research Hospital in Kansas City, where they had taken him the day before, from his home in Argentine. He was in the presence of his wife and sister, Mrs. F. W. Lapham. The remains were brought to Coolidge and burial with Masonic honors in the Coolidge Cemetery, Friday afternoon on 19 Jul 1918.

ELECTA V. DONOHUE

The Emporia Gazette – Wednesday, 13 Aug 1947

DIES IN HOSPITAL BUILT AS HUSBAND'S MEMORIAL

Syracuse, Aug. 13 – Mrs. Electa V. Donohue, 86, died here yesterday in the hospital she established as a memorial for her husband, the late John J. Donohue, a pioneer of Hamilton County. She had been a patient at the hospital since 1944.

Mrs. Donohue had the hospital built in 1929 through a guarantee of \$50,000. She gave \$20,000 in 1928 toward the building of the hospital and the remainder of the amount was to be received at the time of her death.

Additional Information
CHARLES W. NOELL



CHARLES WILSON NOELL

Photograph and additional information provided by Joseph Noell

CHARLES WILSON NOELL was born on 25 Oct 1866 in Burlington, Coffey County, Kansas. He was the son of Julius Hatcher Noell (1828-1924) and Martha Casey (1840-1905). Charles had a twin brother, Carl Milton Noell, who moved to California in about 1889.

Charles married **LAURA MABEL KIMBALL**, daughter of John and Sarah Kimball, on 11 Sep 1901, in Burlington, Coffey County, Kansas, at the home of her parents. Charles was a well-known teacher in the Syracuse area. He passed away in Syracuse on 26 Oct 1953. Laura died there on 27 May 1957. Their burial was at the Syracuse Cemetery in Syracuse, Kansas.

One son and seven daughters were born in their marriage:

CARL ALBERT NOELL was born on 9 Feb 1903 in Madison, Greenwood County, Kansas. He married Emma H. Notz on 21 Jul 1928 in Burns, Marion County, Kansas. Carl died on 9 Apr 1971 in Eldorado, Butler County, Kansas. Emma passed away on 9 May 1992 in Burns, Kansas. Their burial was at the Ebenezer Methodist Cemetery in Burns. Three children were born into their marriage: Robert, Evelyn, and Virginia.

MARTHA ELIZABETH NOELL was born on 31 Jul 1904 in Coffey County, Kansas. She died on 21 Jun 1984 in Great Bend, Barton County, Kansas.

MARY PEARL NOELL was born on 31 Jul 1904 (*twin to Martha Elizabeth Noell*) in Lyon County, Kansas. She married Orel Raymond Dodd on 11 Jun 1950 in Syracuse, Hamilton County, Kansas. Orel was born on 8 Jan 1905 in Waldo, Russell County, Kansas. He died on 5 Feb 1971 in Great Bend, Barton County, Kansas. Mary died there on 11 Jun 1995.

JULIA ANNA NOELL was born on 9 Jan 1906 in Hartford, Coffey County, Kansas. She passed away on 29 Jan 1972 in Syracuse, Hamilton County, Kansas. Her burial was at the Syracuse Cemetery.

CHARLOTTE MAE NOELL was born on 10 Aug 1909 in Syracuse, Hamilton County, Kansas. There she married Louis Elbert Dodson on 1 Aug 1933. Louis was born on 13 Sep 1908 in Purcell, McClain County, Oklahoma. He was the son of Henry Dodson and Mary Etna Massey. Louis and Charlotte had two children, Clifford Noell Dodson (1934-1934) and Lois Charlene Dodson (1936-1936). Charlotte Mae (Noell) Dodson died on 12 Dec 1943 in Seattle, King County, Washington and buried at the Syracuse Cemetery in Syracuse, Hamilton County, Kansas. Louis married again... to Bertha Alice Beasley (1919 - 2002) on 18 Nov 1945 in Seattle. He passed away on 18 Nov 2001 in Kirkland County, Washington. Louis and Bertha were buried at the Forest Lawn Cemetery in Seattle, King County, Washington.

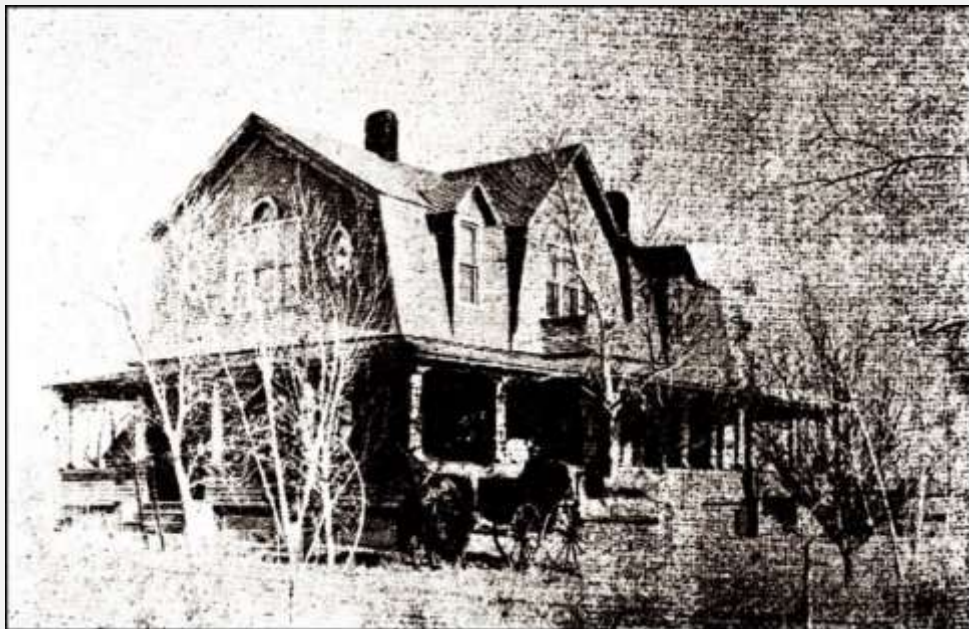
LILLIE ADELINE NOELL was born on 7 Oct 1911 in Syracuse, Hamilton County, Kansas. She married Allen Andrew May, son of Roy Allen May and Rose Sturgeon, on 20 May 1932 in Garden City, Finney County, Kansas. Allen was born on 12 Sep 1910 in Chicago, Cook County, Illinois. He passed away on 22 Feb 2005 in Seattle, King County, Washington. Lillie died there on 28 Oct 2009. Their burial was at the Forest Lawn Cemetery in Seattle. Allen and Lillie had two children, Geraldine Joyce May (1933-2015) and Allen Charles May (1938-2004).

DOROTHY NELLE NOELL was born on 15 May 1914 in Syracuse, Hamilton County, Kansas. She married EDWARD LORICE CARLISLE, son of Omer Carlisle and Cecile Matney, on 1 Jan 1946 in the state of Missouri. Edward was born on 8 May 1911 in Indiana. He passed away on 3 May 1975 in Phoenix, Maricopa County, Arizona, and buried at the Green Acres Memorial Park Cemetery in Scottsdale, Maricopa County, Arizona. Dorothy died on 20 Apr 2003 in Wimberley, Hays County, Texas. Her burial place is unknown.

CATHERINE MYRTLE NOELL was born on 15 Nov 1918 in Syracuse, Hamilton County, Kansas. She married Karl Ivor Hennem. Karl was born on 22 Nov 1919 in Seattle, King County, Washington. Catherine passed away on 30 Mar 2003 in Seattle and Karl died there on 15 Aug 2010. Burial for both was at the Tahoma National Cemetery in Kent, King County, Washington.

Additional Information
W. F. REED

WILLIAM FREDERICK REED, son of Darius Reed and Eunice Curtis, was born on 5 Jun 1859 in Pomeroy, Meigs County, Ohio. He married **LILLIAN THOMPSON** (1859-1935). W. F. Reed sold the Bank of Syracuse in May of 1904 and moved his family back to Pomeroy, Ohio. He continued in the banking business there. He died on 24 Mar 1944 in Pomeroy and buried there at the Beech Grove Cemetery. Children born in their marriage were **THEODORE T. REED** (8 Jan 1888 – 15 Jun 1962), **DARIUS CURTIS REED** (4 Apr 1890 – 30 Apr 1964), **WILLIAM FREDERICK REED, JR.** (31 Mar 1899 – 27 Aug 1986), and **EUNICE H. (REED) HOBART** (Born 23 May 1902).



W. F. Reed's home in 1903, before moving to Ohio in 1904
Photograph found in the Syracuse, Kansas Journal, 13 Mar 1903

Additional Information
JAMES B. HAMMOND

JAMES B. HAMMOND was born on 2 May 1859 in Wisconsin. (His obituary gives his date of birth as 1859. Cemetery records give it as 18 Oct 1862.) He was married to **EDNA WILLIS**, daughter of

William Willis and Virginia Prather, on 19 Aug 1897 in Syracuse, Hamilton County, Kansas. Edna was born on 26 Mar 1874 in Danville, Vermilion County, Illinois. James passed away on 18 Mar 1938. Edna died on 25 May 1966 in Wichita, Sedgwick County, Kansas, at the Kansas Masonic Home.

They had one daughter, **HELEN MARGUERITE HAMMOND**. She was born on 26 Aug 1906 in Hamilton County, Kansas. Helen was married to Durward Andrew "Kelly" Swenson on 7 Jun 1958 in Illinois. Durward was born on 27 Jul 1904 in Kansas. Helen passed away on 29 Apr 1984 in Gillette, Campbell County, Wyoming. Durward died there on 4 Apr 1989. Their burial was at the Mount Pisgah Cemetery in Gillette. Helen and Durward had one son, James Durward Swenson who was born on 27 May 1933 in Syracuse, Hamilton County, Kansas. He died on 17 Jan 2006 in Rockford, Winnebago County, Illinois.

NEWSPAPER OBITUARIES

The Syracuse (Kansas) Journal - Friday, 25 March 1938

HEART ATTACK FATAL TO JAMES B. HAMMOND

Hamilton County and the surrounding territory were shocked last Friday by the sudden death of J.B. Hammond, a pioneer settler and well-liked citizen of the community since 1886. Mr. Hammond was stricken with a heart attack at his home in the east part of Syracuse at about eleven o'clock Friday morning. He died that afternoon at about 4:30. Until the time of his seizure, he had been in his usual good health, having returned only a few hours before from his post at the port of entry in Coolidge. His wife was with him when he passed away, and their only daughter, Mrs. D. A. Swenson, and Mr. Swenson arrived a short time later from Burdett, Kansas.

Born in Wisconsin on 2 May 1859, Mr. Hammond came to Hamilton County from Rockford, Ohio, when still a young man, and proved up a homestead in Richland Township in 1887. Selling his claim a short time later he began a career as a schoolteacher and taught in the schools of Kendall, Syracuse, Hartland, and Coolidge. While teaching in the later town he was attracted by Miss Edna Willis, also a teacher, whom he married. Later they moved to Syracuse, which has since been their home.

During the greater part of his long residence in Syracuse, Mr. Hammond engaged in the insurance business and continued with his political activities. He became known over all Hamilton County and adjoining counties in southwestern Kansas. For about thirty years, he served the Democratic Party as its County Chairman and successfully guiding his party to victory in many contests despite a normal opposition majority. During all these years he never sought a political office for himself, except for a brief term on the state irrigation board, he accepted a political appointment. Three years ago, he expressed a wish to withdraw from the leadership of his party, claiming that he had served his time. He later took over the duties of inspector at the port of entry in Coolidge which position he held at the time of his death.

Mr. Hammond was a member of the Masonic Lodge for 55 years, transferring his membership to the Syracuse lodge from Ohio in 1910. A few years ago, he served the local lodge as Master. His funeral services were conducted at his home Sunday afternoon, and attended by members of the fraternity from many neighboring chapters. He was laid to rest in the Syracuse Cemetery following a brief Masonic service at the grave. Pallbearers were Grover Miller, Fred Ford, W. E. Patton, C. R. Dollings, H. E. Roundtree, and W. C. Daugherty. Rev. Lyman Johnson delivered a short sermon and offered prayer. A quartet that consisted of Miss Fern Patton, Mrs. O. P. Reeve, M. D. Sellers, and B. J. Cory, furnished music.

Garden City (Kansas) Telegram, Friday, 27 May 1966

MRS. EDNA (WILLIS) HAMMOND

SYRACUSE – The funeral for Mrs. Edna Hammond, 92, who died Wednesday at the Kansas Masonic Home in Wichita, was this afternoon at the First Methodist Church, here. Mrs. Hammond had lived at the Masonic Home since 1957, having been a resident of Syracuse since 1885. She was born on 26 March 1874, in Danville, Illinois, and was married to James Hammond on 19 Aug 1897 at Syracuse. He died in 1938. Edna was a member of the First Methodist Church and Order of the Eastern Star, both of Syracuse. Surviving is a daughter, Mrs. Helen Swenson, Gillette, Wyoming; a sister, Mrs. Mattie Burton, Syracuse; one grandchild, and four great-grandchildren.

Additional Information WILLIAM C. DAUGHERTY

WILLIAM CHARLES DAUGHERTY, son of Anthony Scott Daugherty (1849-1934) and Sarah Rupert (1855-1931), was born on 2 Jul 1876 in Ottumwa, Wapello County, Iowa. In 1880, his parents moved the family to Empire, Ellsworth County, Kansas.

In the year 1900, William was living as a boarder in La Crosse, Rush County, Kansas. There he was working as a druggist. William married **MARY DIEHL** (1879-1929), daughter of Henry Diehl (1837-1917) and Anna Lang (1855-1929), on 3 Feb 1901 in Brookville, Saline County, Kansas. Mary was born on 15 Apr 1879 in Saline County, Kansas.

After moving to Syracuse, Kansas, William Daugherty opened his own drug store business on 23 Oct 1906. He was also the president of the First National Bank, was on the city council, on the school board and on the board of the Donohue Memorial Hospital. He served three terms in the Kansas Legislature, starting in 1939.

Mary passed away on 2 Apr 1929 in Syracuse, Kansas. William died there on 2 Oct 1962.

William and Mary had two sons: **WILLIAM S. DAUGHERTY** who was born on 25 Jul 1907 in Syracuse, Hamilton County, Kansas and died there in May of 1980, and **ROBERT M.**

DAUGHERTY who was born on 14 July 1909 in Syracuse, Kansas and died on 30 Oct 1981 in Liberal, Seward County, Kansas.

NEWSPAPER ADVERTISEMENT FOR DAUGHERTY'S DRUG STORE



The Syracuse (Kansas) Journal and Republican News
Friday 31 Dec 1909

Additional Information EASTON COLE BRAY

EASTON COLE BRAY, son of Michael Vernon Bray and Eva Catherine Cole, was born 5 Jul 1892 in Hamilton, Caldwell County, Missouri. He left for Kansas in 1903. He was married to LOIS HENRIETTA CALDWELL, daughter of Patrick H. Caldwell and Sarah Louise Chapman, on 2 Sep 1917 in Virginia, Cass County, Illinois. Lois was born on 5 Nov 1892 in Cass County, Illinois. Easton worked as a successful independent wheat farmer. Lois died on 7 Aug 1975. He died on 31 Jul 1982. Their burial was at the Syracuse Cemetery in Syracuse, Hamilton County, Kansas.

Easton and Lois had three children:

JEANNE LOU BRAY was born on 24 Jun 1918 in Syracuse, Kansas. She died on 8 Jun 1970 and the burial was at the Syracuse Cemetery in Syracuse, Kansas.

AUDACE BRAY was born on 4 Apr 1920 in Syracuse, Kansas. She was married young, to Jack Clifford Ellison, son of Edward E. Ellison and Bessie Warner, on 4 Sep 1936 in Las Animas, Bent County, Colorado. Jack Ellison was born on 25 Sep 1911 and died on 16 Oct 2000. Audace passed away in April of 1985 and burial for both was at the Syracuse Cemetery. One son was born in their marriage, Roderick Laird Ellison (1937-1997).

THAD K. BRAY was born on 3 Mar 1930 in Colorado. He died on 16 Jul 1954, and his burial was at the Syracuse Cemetery in Syracuse, Kansas.

NEWSPAPER OBITUARY

The Wichita (Kansas) Eagle Beacon, 5 Aug 1982

EASTON COLE BRAY – SYRACUSE CIVIC LEADER

SYRACUSE – Easton Cole Bray, a banker and important figure in Hamilton politics since the 1930s, will be remembered at a memorial service today in Syracuse.

Mr. Bray, 90, died Saturday. He was a resident of Syracuse for 79 years. He was a leader in Hamilton County banking and social organizations, serving as a director of the Valley State Bank for 50 years. He was vice president of the bank for 35 years until his retirement in the mid-1970s. He also was a resourceful farmer, working during the Dust Bowl years to perfect a moisture-preserving method of plowing using special equipment and mulch.

He was a very generous man and among his charities were state museums and his church, the First Presbyterian Church in Syracuse. He donated a city block for the church to be built. He was most active in Republican politics, serving on the State Highway Commission from 1932 to 1936 under Governor Alf Landon. He twice served as Hamilton County Republican Chairman.

He married Lois Chapman Caldwell in Virginia, Illinois, in September 1917. They had three children.

A memorial has been established with the Hamilton County Hospital.

One daughter, Audace Ellison of Syracuse, survives him: one granddaughter: one grandson: seven great-grandchildren: and three great-great-grandchildren.